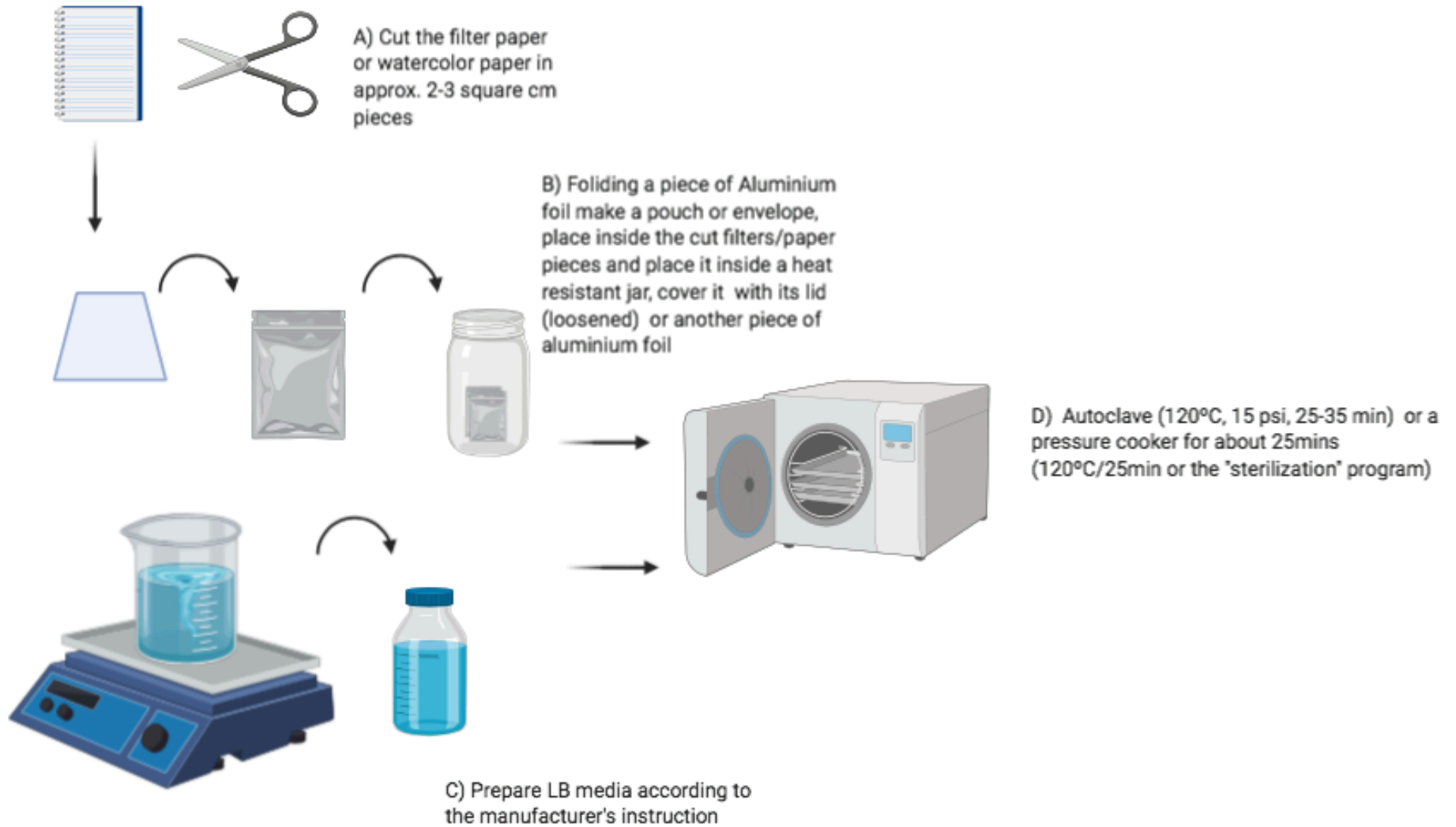


Recovery of cells from glycerol stock

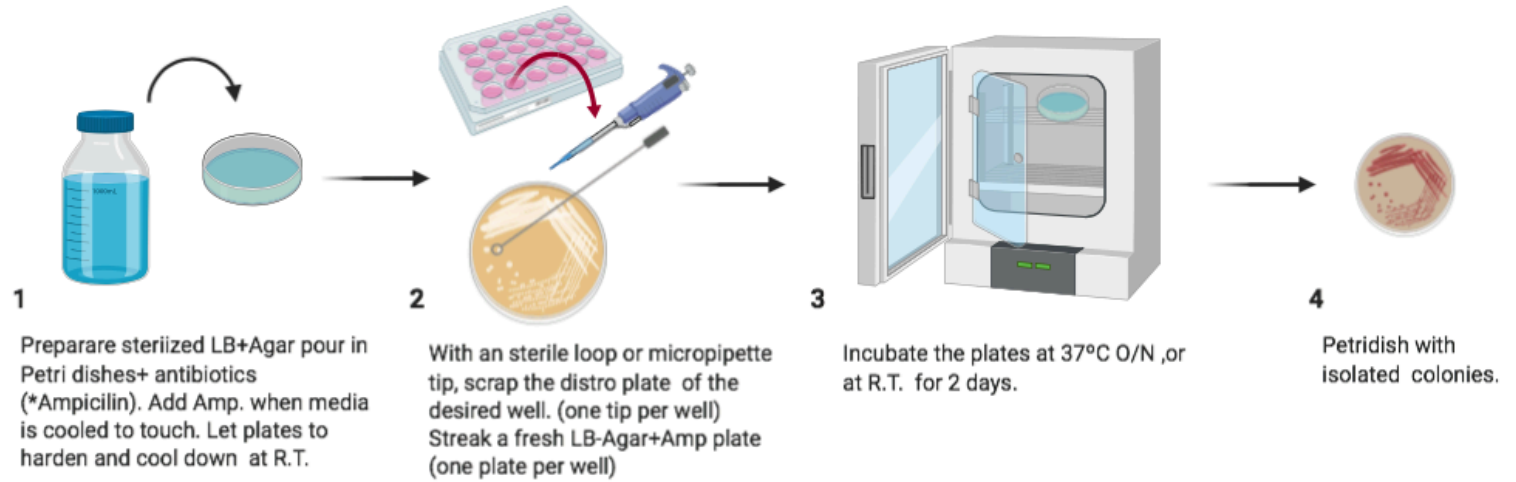
1) Preparation of materials



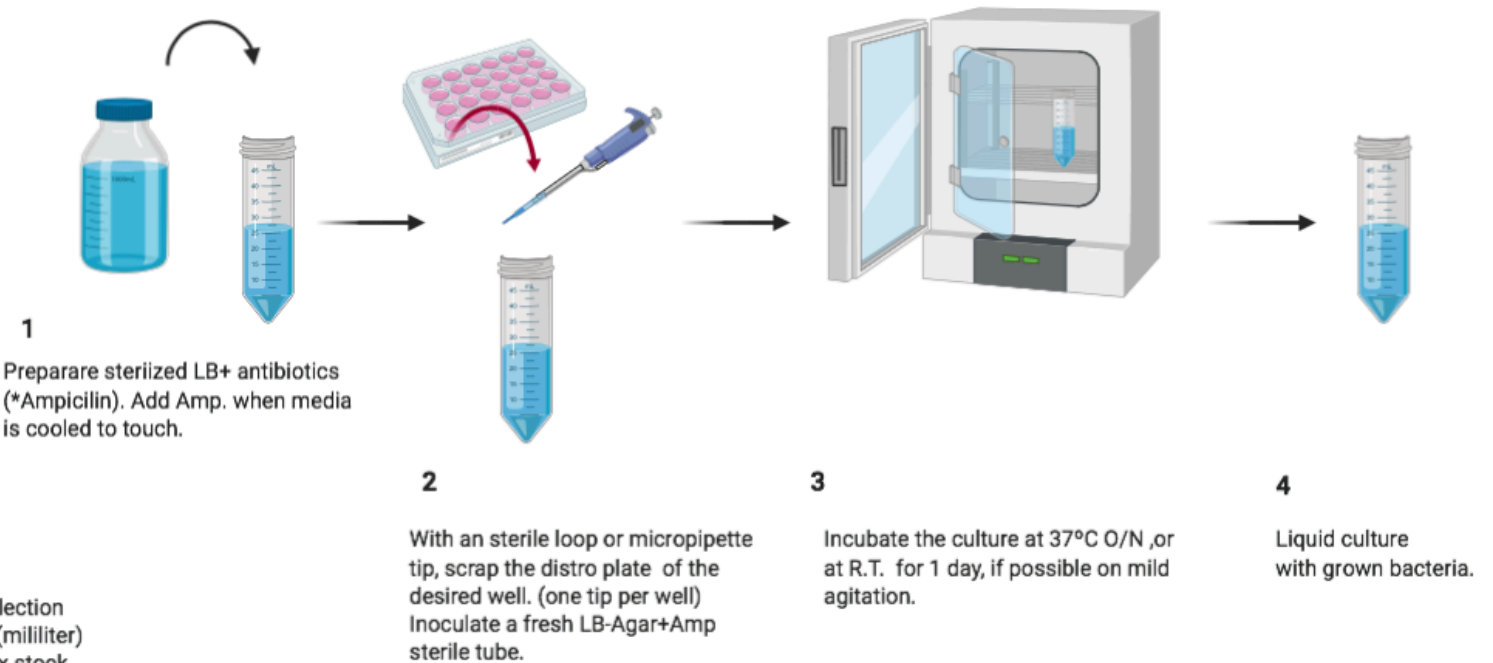
2) Cell culture

Two options:

A) LB-Agar Plates



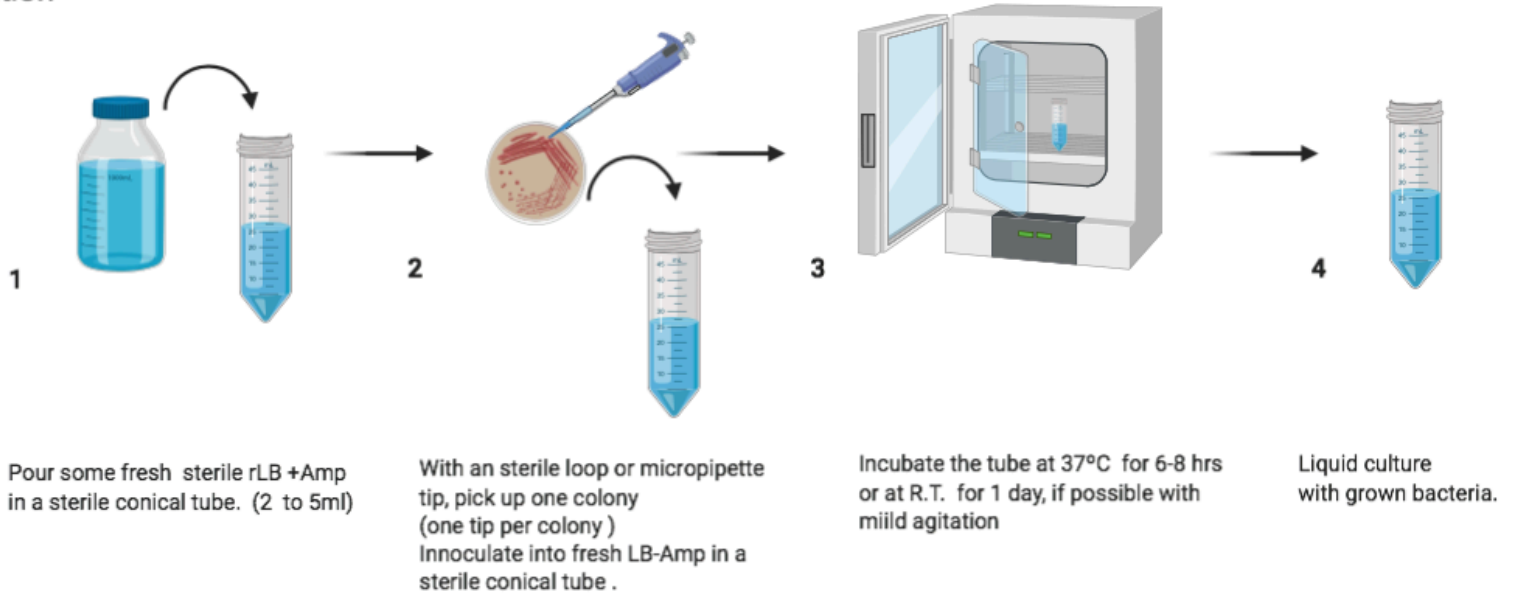
B) Direct LB culture



*Ampicillin:

Normal concentrations for plasmid selection are 100ug / mL. 1 gram makes 10 mL(milliliter) enough for 10 Liters of media. A 1000x stock is made by adding 100mg per mL of distilled water. Then add 1uL(microliter) stock per mL of culture media.

3) Filter paper preparation



*5 If using a direct culture (Page 2) you can start from here , but is preferable to use a culture from an isolated colony .

